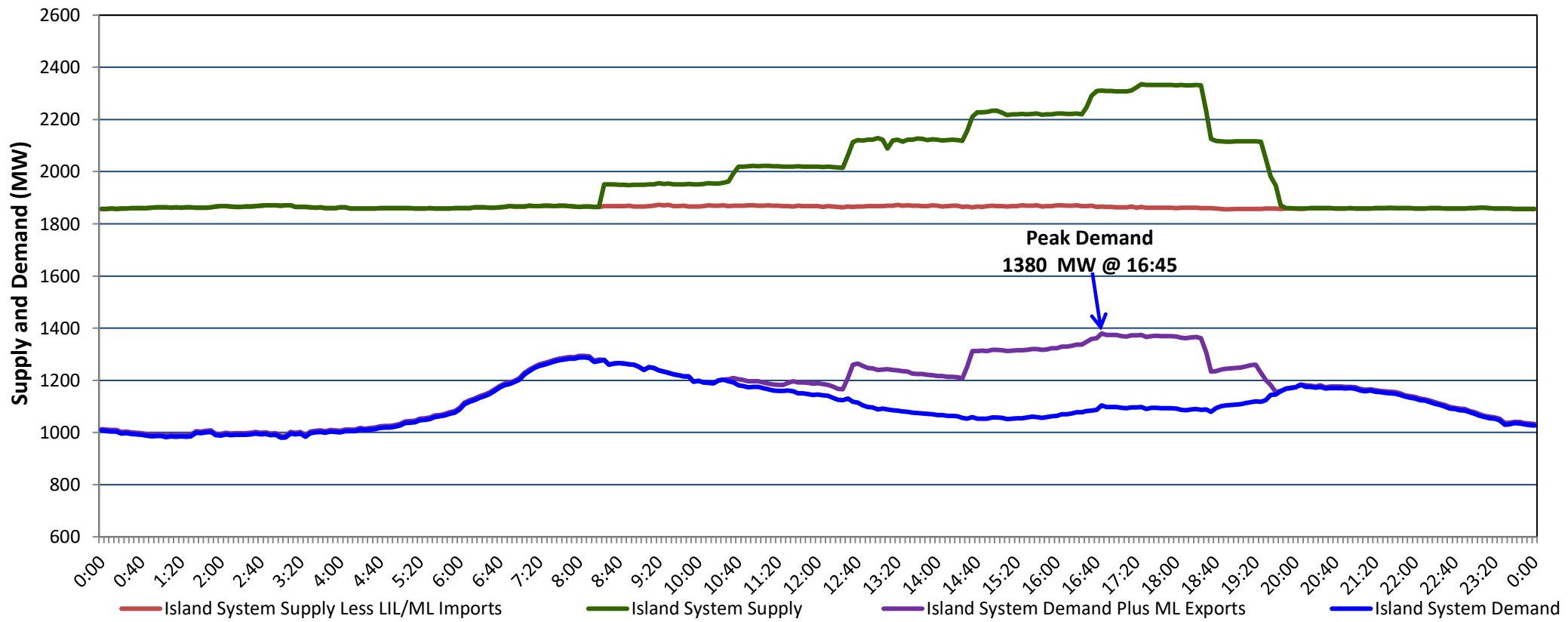


**Newfoundland Labrador Hydro (NLH)
Supply and Demand Status Report Filed Thursday, March 30, 2023**

**Section 1
Island Interconnected System Supply, Demand & Exports
Actual 24 Hour System Performance For Wednesday, March 29, 2023**



Supply Notes For March 29, 2023

1,2

- A As of 0701 hours, March 06, 2023, Upper Salmon Unit unavailable due to planned outage (84 MW).
- B As of 1428 hour, March 26, 2023, Paradise River Unit unavailable due to planned outage (8 MW).
- C As of 1907 hours, March 27, 2023, Holyrood Unit 1 available at 90 MW (170 MW).

**Section 2
Island Interconnected Supply and Demand**

Thu, Mar 30, 2023	Island System Outlook ³		Seven-Day Forecast	Temperature (°C)		Island System Daily Peak Demand (MW)	
				Morning	Evening	Forecast	Adjusted ⁷
Available Island System Supply: ⁵	2,263	MW	Thursday, March 30, 2023	-2	-3	1,595	1,497
NLH Island Generation: ^{4,8}	1,520	MW	Friday, March 31, 2023	-5	-4	1,315	1,220
NLH Island Power Purchases: ⁶	100	MW	Saturday, April 1, 2023	-3	-1	1,215	1,121
Other Island Generation:	215	MW	Sunday, April 2, 2023	4	3	1,120	1,027
ML/LIL Imports:	428	MW	Monday, April 3, 2023	-2	-3	1,320	1,225
Current St. John's Temperature & Windchill:	-3 °C	-8 °C	Tuesday, April 4, 2023	1	0	1,235	1,141
7-Day Island Peak Demand Forecast:	1,595	MW	Wednesday, April 5, 2023	-1	-1	1,260	1,165

Supply Notes For March 30, 2023

3

- Notes:
1. Generation outages for running and corrective maintenance are included. These are not unusual for power system operations. They generally do not impact customer supply. The power system operators schedule outages to system equipment whenever possible to coincide with periods when customer demands are low and sufficient supply reserves are available. However, from time to time equipment outages are necessary and reserves may be impacted.
 2. Due to the Island system having no synchronous connections to the larger North American grid, when there is a sudden loss of large generating units there may be a requirement for some customer's load to be interrupted for short periods to bring generation output equal to customer demand. This automatic action of power system protection, referred to as under frequency load shedding (UFLS), is necessary to ensure the integrity and reliability of system equipment. Under frequency events have typically occurred 5 to 8 times per year on the Island Interconnected System and the resultant customer load interruptions are generally less than 30 minutes. With the activation of the Maritime Link frequency controller during the winter of 2018, UFLS events have occurred less frequently.
 3. As of 0800 Hours.
 4. Gross output including station service at Holyrood (24.5 MW) and improved NLH hydraulic output due to water levels (35 MW).
 5. Gross output from all Island sources (including Note 4).
 6. NLH Island Power Purchases include: CBPP Co-Gen, Nalcor Exploits, Rattle Brook, Star Lake, Wind Generation and capacity assistance (when applicable).
 7. Adjusted for curtailable load, market activities and the impact of voltage reduction when applicable.
 8. Due to limitations inherent in the design of combustion turbines, the output of combustion turbines may be reduced in the event that ambient temperatures exceed the threshold

**Section 3
Island Peak Demand Information
Previous Day Actual Peak and Current Day Forecast Peak**

Wed, Mar 29, 2023	Actual Island Peak Demand ⁹	16:45	1,380 MW
Thu, Mar 30, 2023	Forecast Island Peak Demand		1,595 MW

- Notes: 9. Island Demand / LIL / ML Exports (where applicable) is supplied by NLH generation and purchases, plus generation owned and operated by Newfoundland Power and Corner Brook Pulp & Paper (Deer Lake Power, DLP).